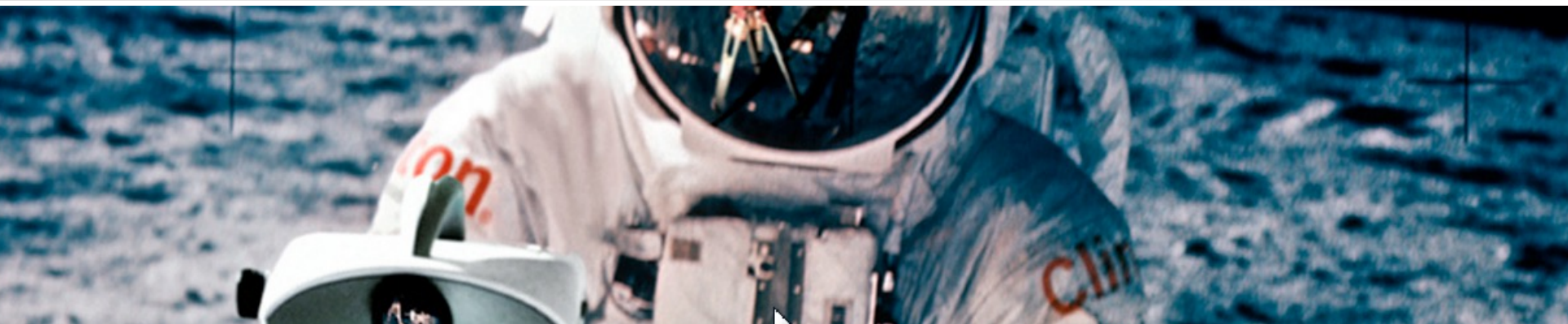
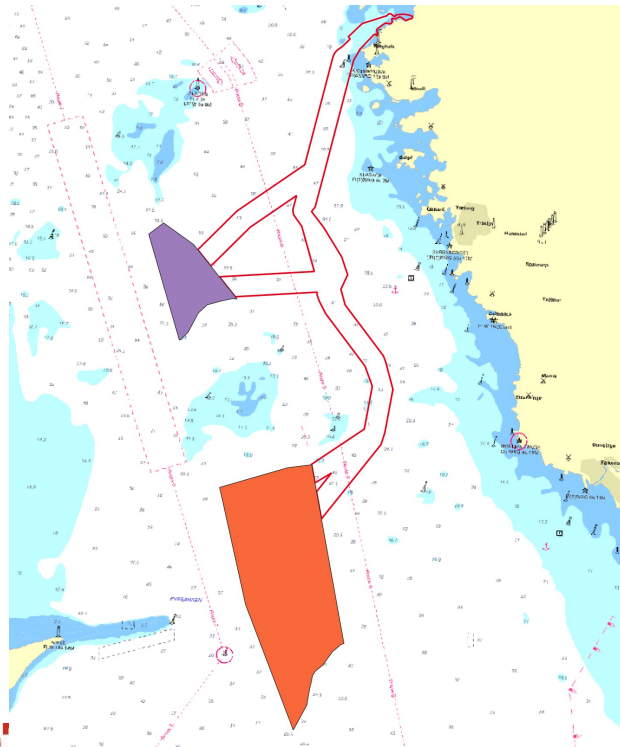
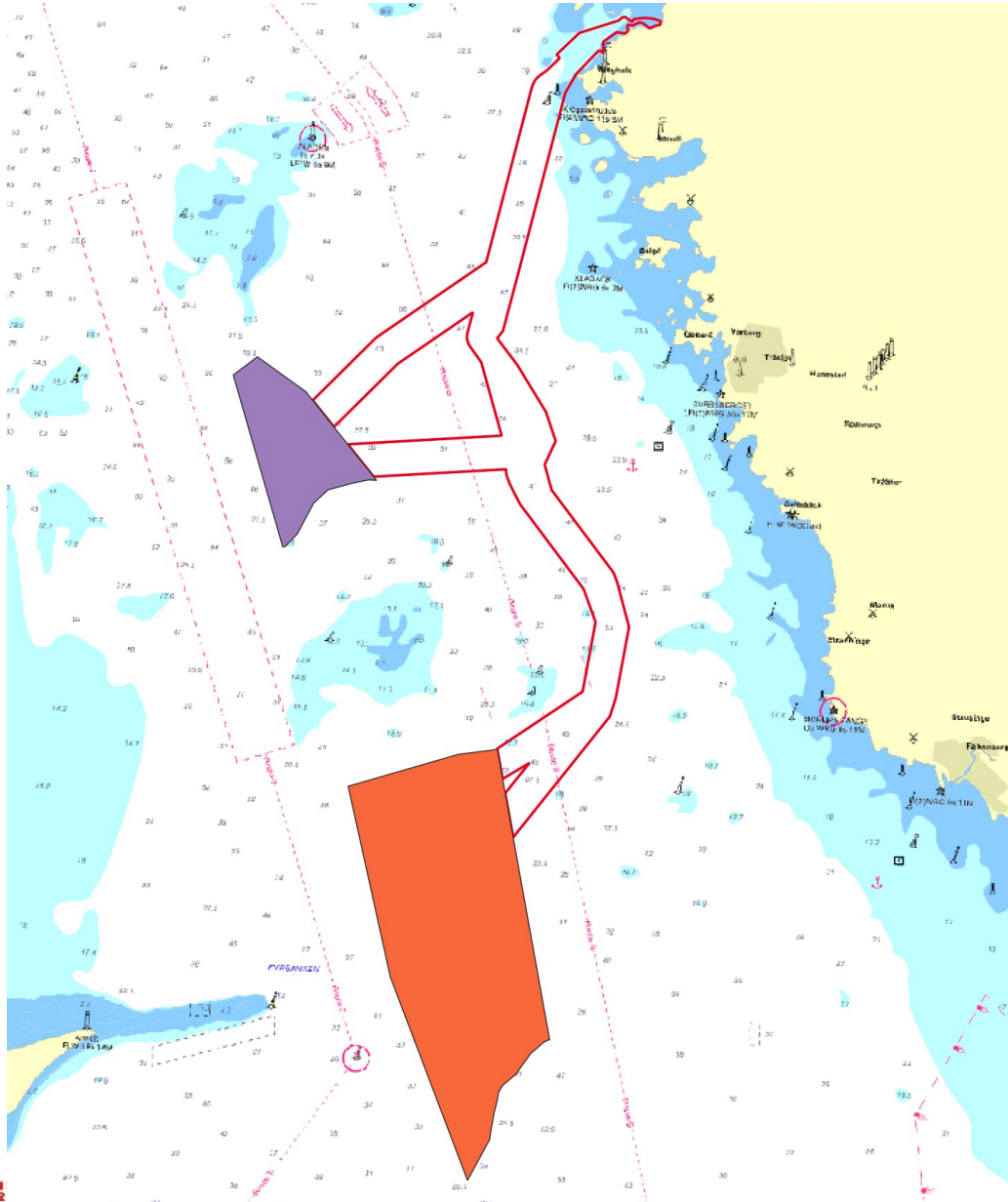


Notice to Mariners Geophysical survey, Galatea-Galene, Kattegatt area



- VESSEL:** **M/V NORTHERN STORM**
- MANEUVERABILITY:** **LIMITED MANEUVERABILITY**
- EQUIPMENT:** **MULTIBEAM (HULL MOUNTED), SOUND VELOCITY PROFILER (TOWED)
*(WITH THE OPTION OF ALSO USING SUB-BOTTOM PROFILER (HULL MOUNTED))***
- TIME:** **1ST OF SEPTEMBER TO 30TH OF OCTOBER – 2022**
- AIM:** **HYDROGRAPHIC CONDITIONS FOR A POTENTIAL FUTURE WIND FARM**





Hull mounted sub-bottom profiler will maybe also be used. We are awaiting granting on permit for that and until any decision of that permit application NO sub-bottom profiler equipment will be used.

Clinton will send updated notice to mariners IF such permit is granted and received.

M/V Northern Storm

Calls sign: MISA7

Bridge: +46 31 30 11 132

Email: master-northernstorm@clinton.se

Contact person at Clinton Marine Survey:

Philip Ljungström	Project Manager	+46 708 79 90 26
Martin Wikmar	CEO	+46 708 79 90 20

